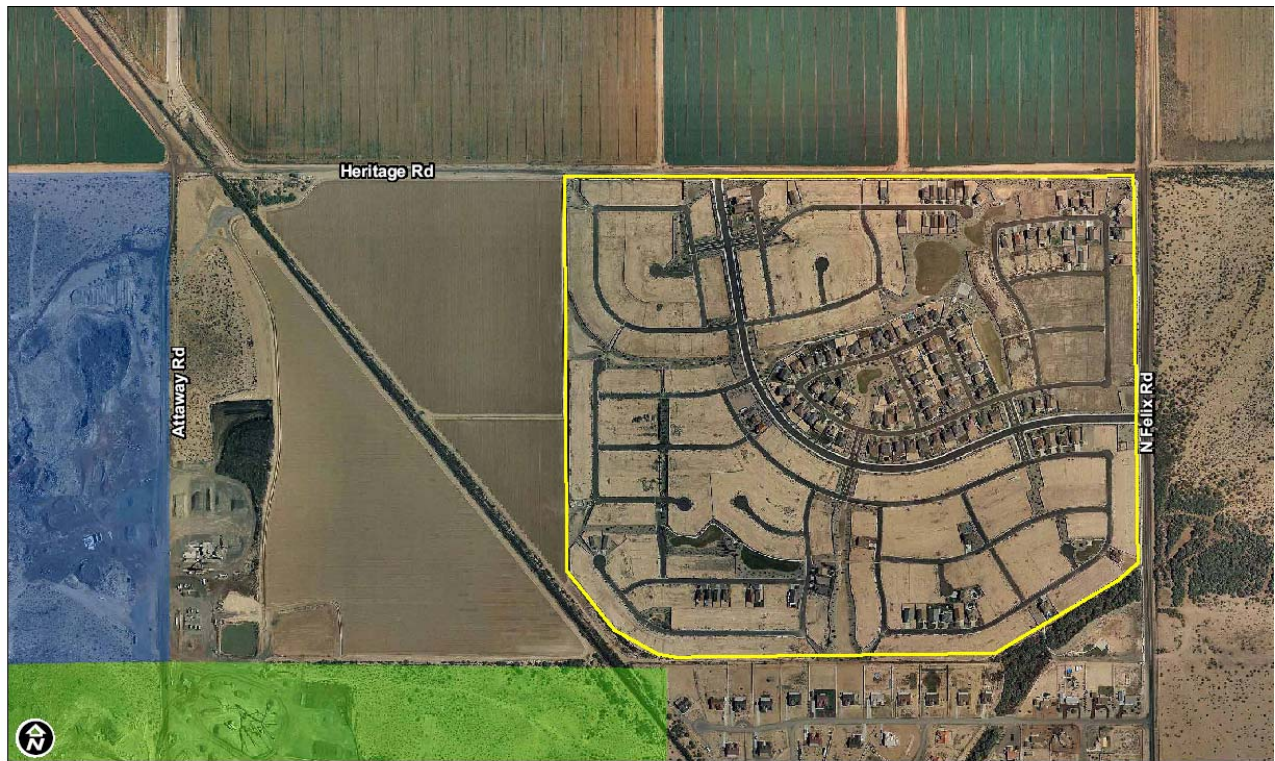


8141 E Indian Bend Rd, Suite 103
Scottsdale AZ 85250
Tel: (480) 443-8570
Fax: (480) 443-3736
www.westland-properties.com



Westland Properties Group Closes another *Finished Lot* transaction

January 29, 2010 – Quantum Capital purchased (221) fully developed lots within the **Crestfield Manor** Master Plan for \$2,099,500 (\$9,500/fully developed lot) from IMH (Shane Albers, President). The lots are located at Felix Rd & Heritage Rd in North Pinal County and have a typical lot size of 45' x 115'. Grant Helgeson, Don McCaul and Ryan Arp of the Westland Properties negotiated the transaction.



**CRESTFIELD MANOR
HERITAGE RD & FELIX RD
NORTH PINAL COUNTY, ARIZONA**

Grant D Helgeson, Designated Broker - Direct: (480) 675-5149
Don McCaul, Broker - Direct: (480) 675-5144
Ryan Arp, Agent - Direct: (480) 675-5145

WPG WESTLAND PROPERTIES GROUP
8141 E Indian Bend Rd, Ste 103 Scottsdale AZ 85250
Tel: (480) 443-8570 / Fax: (480) 443-3736
www.westland-properties.com



Grant D Helgeson



Don McCaul



Ryan Arp

THE INFORMATION CONTAINED HEREIN WAS OBTAINED FROM SOURCES DEEMED RELIABLE, BUT IS NOT GUARANTEED BY THE BROKER. ALL DIMENSIONS, SIZES AND FIGURES ARE APPROXIMATE. THE PROPERTY IS SUBJECT TO PRIOR SALE, PRICE CHANGE OR WITHDRAWAL.