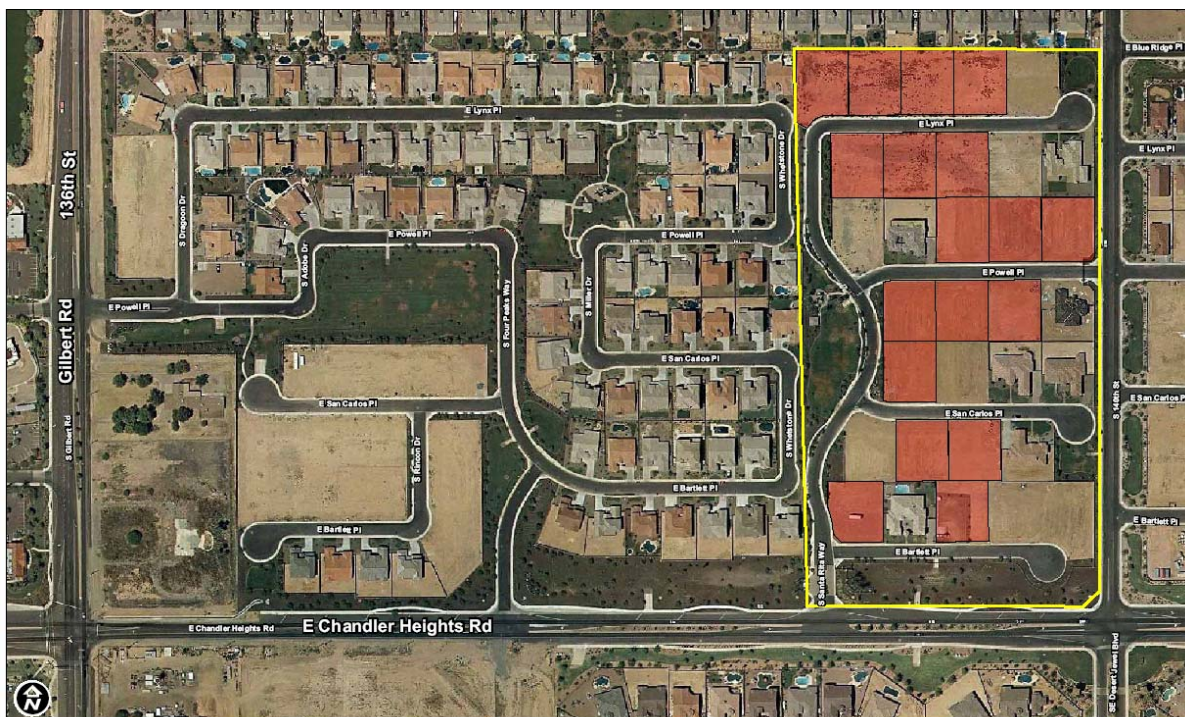


8141 E Indian Bend Rd, Suite 103
Scottsdale AZ 85250
Tel: (480) 443-8570
Fax: (480) 443-3736
www.westland-properties.com



Westland Properties Group Closes another Finished Lot transaction

July 7, 2010 – TW Lewis Homes (Tom Lewis, President) purchased (18) fully developed lots within the **Landing at Reid's Ranch** subdivision at Chandler Heights & Gilbert Rd in Chandler. The typical lot size is 125' x 144'. The lots were purchased at Trustee Sale for \$1,317,500 (\$73,194/Lot). The Beneficiary at Trustee Sale was Compass Bank. The lots were originally developed by Amberwood Homes. TW Lewis Homes plans to build homes on these lots to sell to third party homebuyers. The Buyer was represented by Grant Helgeson, Don McCaul, and Ryan Arp of the Westland Properties Group.



LANDING AT REIDS RANCH
CHANDLER HEIGHTS RD & GILBERT RD
CHANDLER, ARIZONA

Grant D Helgeson, Designated Broker - Direct: (480) 675-5149
Don McCaul, Broker - Direct: (480) 675-5144
Ryan Arp, Agent - Direct: (480) 675-5145

WPG WESTLAND PROPERTIES GROUP
8141 E Indian Bend Rd, Ste 103 Scottsdale AZ 85250
Tel: (480) 443-8570 / Fax: (480) 443-3736
www.westland-properties.com



Grant D Helgeson



Don McCaul



Ryan Arp

THE INFORMATION CONTAINED HEREIN WAS OBTAINED FROM SOURCES DEEMED RELIABLE, BUT IS NOT GUARANTEED BY THE BROKER. ALL DIMENSIONS, SIZES AND FIGURES ARE APPROXIMATE. THE PROPERTY IS SUBJECT TO PRIOR SALE, PRICE CHANGE OR WITHDRAWAL.