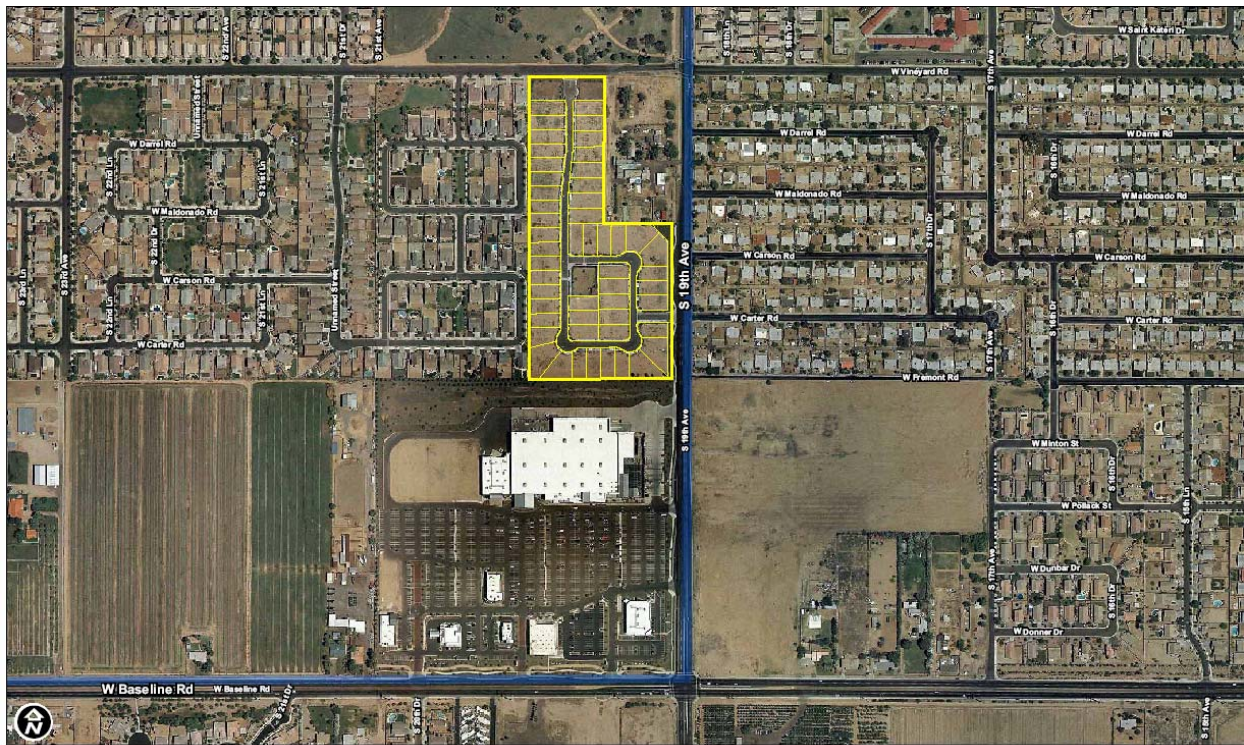


8141 E Indian Bend Rd, Suite 103
Scottsdale AZ 85250
Tel: (480) 443-8570
Fax: (480) 443-3736
www.westland-properties.com



Westland Properties Group Closes another Finished Lot transaction

July 16, 2010 – Lexin Capital (Metin Negrin, Principal) purchased 51 fully developed lots from the FDIC for \$1,402,500 (\$27,500/lot) at the **Veneto** gated subdivision located off of 19th Avenue and Baseline in Phoenix. The typical lot size is 65' x 125'. The Seller was represented by Grant Helgeson, Don McCaul and Ryan Arp of the Westland Properties Group. The lots were being exclusively marketed by the Westland Properties Group on behalf of the FDIC.



VENETO
51 FULLY DEVELOPED LOTS
19th AVE & BASELINE RD AREA
PHOENIX, ARIZONA

Grant D Helgeson, Designated Broker - Direct: (480) 675-5149
Don McCaul, Broker - Direct: (480) 675-5144
Ryan Arp, Agent - Direct: (480) 675-5145

WPG WESTLAND PROPERTIES
GROUP
8141 E Indian Bend Rd, Ste 103 Scottsdale AZ 85250
Tel: (480) 443-8570 / Fax: (480) 443-3736
www.westland-properties.com



Grant D Helgeson



Don McCaul



Ryan Arp