

8141 E Indian Bend Rd, Suite 103
Scottsdale AZ 85250
Tel: (480) 443-8570
Fax: (480) 443-3736
www.westland-properties.com



EXCLUSIVE LISTING
POTENTIAL MULTIFAMILY or ASSISTED LIVING SITE
POWER RD & UNIVERSITY DR
MESA, ARIZONA

LOCATION: Site is located at the southeast corner of Power Rd & University Dr, Mesa, Arizona.

NUMBER OF ACRES: 12.5 Gross

USE CONCEPT: 200+ Units Assisted Living Facility or Apartments

CURRENT ZONING: C-2 / City of Mesa

SUGGESTED PRICE: **\$1,250,000**

SUGGESTED TERMS: Cash. 45-day feasibility period with a close of escrow upon rezoning and site plan approval with the City of Mesa.

UTILITIES: Water: City of Mesa
Sewer: City of Mesa
Electric: Salt River Project

CONTACT: Grant D. Helgeson, Don McCaul, Ryan Arp
Westland Properties Group

COMMENTS: Site was previously conceptually planned as “**Highland Ranch / Skyview**” for (85) Single Family Residential Lots. Typical lot size 37’6” x 77’



E University Dr

N 67th St

E Butte St

E Billings St

E Boise St

E Barstow St

N Saffron Cir

E Boston St

N Power Rd

Fourth Ave

Augusta Dr

Third Ave

Third Ave

E 9th Ave

E 8th Ave

E 7th Ave

E 6th Ave

E 4th Ave

E 5th Ave

Doral

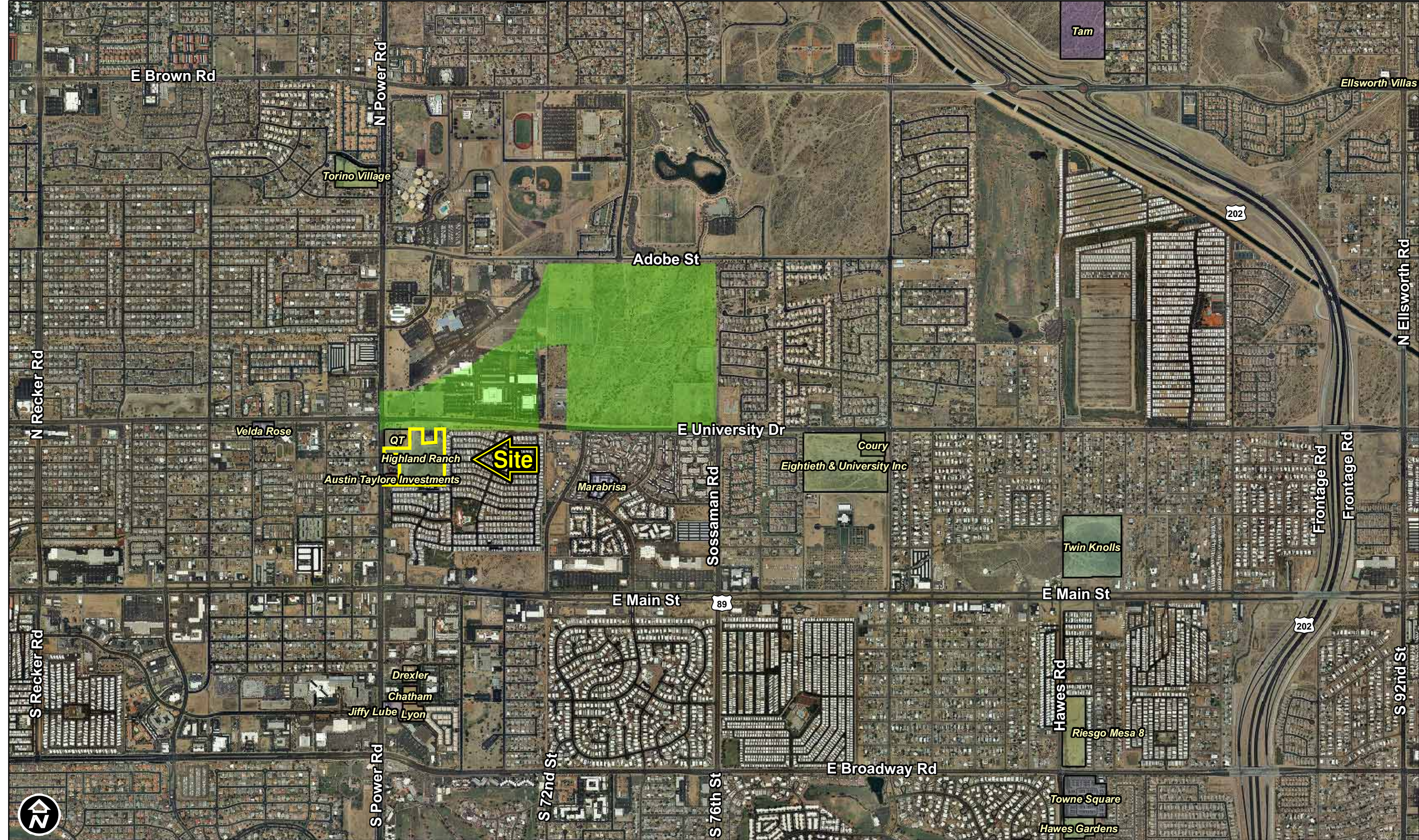
Doral



HIGHLAND RANCH
12.5 ACRES / CONCEPTUALLY PLATTED FOR (85) 40' x 100' LOTS
POWER RD & UNIVERSITY DR
MESA, ARIZONA

Grant D Helgeson, Designated Broker - Direct: (480) 675-5149
Don McCaul, Broker - Direct: (480) 675-5144
Ryan Arp, Broker - Direct: (480) 675-5145

WPG WESTLAND PROPERTIES
GROUP
8141 E Indian Bend Rd, Ste 103 Scottsdale AZ 85250
Tel: (480) 443-8570 / Fax: (480) 443-3736
www.westland-properties.com



HIGHLAND RANCH
12.5 ACRES / CONCEPTUALLY PLATTED FOR (85) 40' x 100' LOTS
POWER RD & UNIVERSITY DR
MESA, ARIZONA

Grant D Helgeson, Designated Broker - Direct: (480) 675-5149
 Don McCaul, Broker - Direct: (480) 675-5144
 Ryan Arp, Broker - Direct: (480) 675-5145

WPG WESTLAND PROPERTIES
 GROUP
 8141 E Indian Bend Rd, Ste 103 Scottsdale AZ 85250
 Tel: (480) 443-8570 / Fax: (480) 443-3736
 www.westland-properties.com